

CMY161



COMPACT MEGA YACHTS

ECO-FRIENDLY YACHTING IN A BIG BOAT STYLE

OQS

OCEAN QUALITY SYSTEMS

GENERAL SPECIFICATION & OPTIONS

OVERALL DIMENSIONS

Length overall (LOA)	16,1 m	52.82 ft
Length at waterline (LWL)	15,2 m	49.86 ft
Beam	4,51 m	14.79 ft
Draft	0,6 m engines up	2 ft
Design Displacement Light	16,1 t TBD	35 500 lbs
Half loaded	18,1 t TBD	39 900 lbs
Fully loaded	21,8 t TBD	48 100 lbs
Engines	3 x 300 Hp OXE diesel	
Fuel capacity	2x1135 L	2x300 Gals
Water capacity	700 L	185 Gals
Heated water	75 L	20 Gals
Black water	300 L	80 Gals
Grey water	300 L	80 Gals
Maximum speed	27 knots	
Cruising Speed	24 knots	
Range	296 nm at 22 knots 1,500 nm with 1 engine at 7.5 knots	
Classification	CE B	
Builder	Ocean Quality Systems	

This specification is preliminary and can be changed by the builder without prior notice.

GENERAL CHARACTERISTICS

HULL CONSTRUCTION

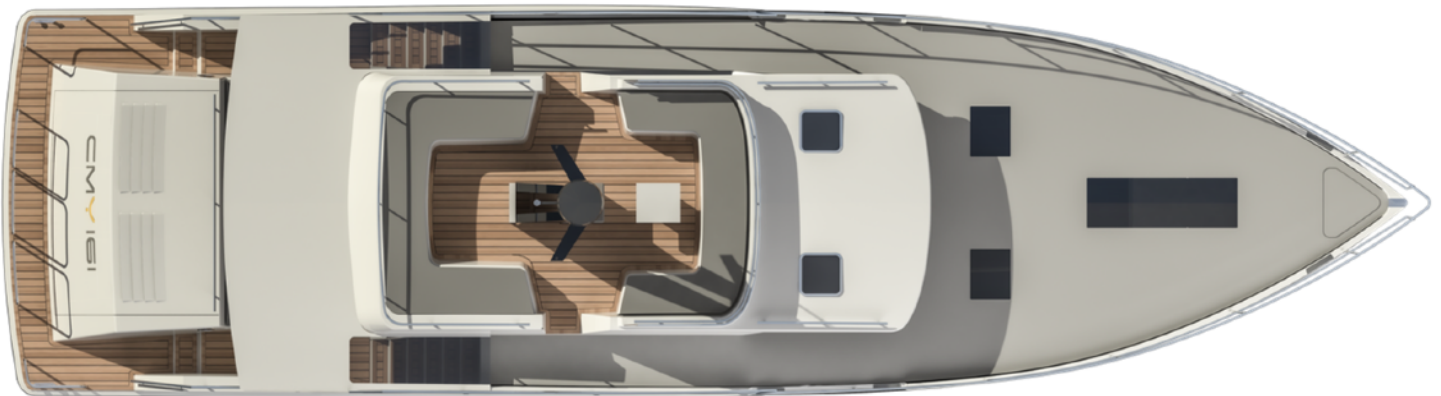
- Hull is infused vinylester E-glass with Corecell/pvc core
- Composite bulkheads with Corecell/pvc core
- Gelcoat finish on the hull
- Through hull connections with lightweight composite fittings
- Fuel tanks in stainless steel
- Water tank in plastic
- Black water tank in plastic
- Grey water tank in plastic
- Semi-Automatic bilge pump system with multiple pumps
- Hull windows in laminated glass
- Rub rail alongside the boat
- Barrier coat below water level

DECK & DECKHOUSE ROOF

- Deck and roof infused vinylester E-glass with Corecell/PVC core
- Windows in laminated glass
- Handrails made in stainless
- Non-skid upper deck
- Synthetic teak in upper deck lounge and aft cockpit areas
- Deck fitting done in stainless steel
- Electric windlass with manual spring supported anchor arm Anchor
- 80 m galvanized anchor chain
- Antenna pole on roof – gelcoat color same as hull
- Cushions in Sunbrella material on the upper deck lounge
- Storage under the aft seating on the upper deck lounge
- Curved windscreen forward in the upper deck lounge area
- Deck hatch to owners cabin w/privacy blind and screen
- Deck hatch to guest cabin w/privacy blind and screen
- Deck hatch to owner head w/privacy blind and screen
- Two deck hatches over helm station
- Two ventilation hatch/port lights between helm & upper deck lounge area
- Front window wipers
- Blinds and screens for deck hatches
- Table in the deckhouse lounge area forward
- Folding seat front side of the antenna pole in the upper lounge area

AFT COCKPIT

- BOYD interactive Touch Table that can be lifted and used as TV
- Sofa aft in the cockpit with integral storage compartment underneath
- Cushion on aft sofa
- Removable handrails on bathing platform
- Handrails on stairs to upper deck
- Bi-Folding doors to saloon for full width access, door in the bi-folding door to access without fully opening the back doors to the saloon
- Bathing ladder on port side of transom
- Steps down to water level on both sides of aft cockpit
- Liferaft storage under both upper deck stairs
- Storage under both upper deck stairs
- Access to storage and technical compartment from hatch in aft cockpit with access ladder



INTERIOR SPECIFICATION

Natural oak interior standard

Walls and ceiling surface panels with soft coverings

SALOON LAYOUTS

STANDARD LAYOUT

U shaped sofa SB side aft, with movable seat aft

Bar/storage on port side

Recessed TV on port side

Flooring out of available choices

Expandable dining table

Dining table with U-shaped sofa forward in saloon -

Port side convertible to double bed

Galley downstairs on SB side with storage above and below

Helm station on starboard side fwd

Observation seating on port side fwd

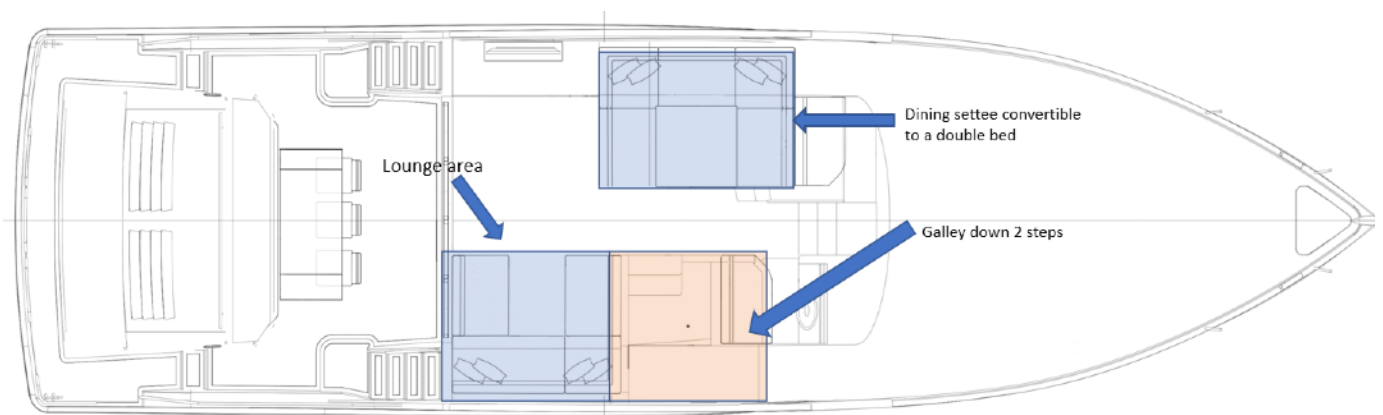
Sound system with speakers in saloon and aft deck

Blinds for saloon windows

LED "kick lighting" strips under seating and bar area

Access to storage through hatches in the saloon floor

Hull window in galley



Standard Layout

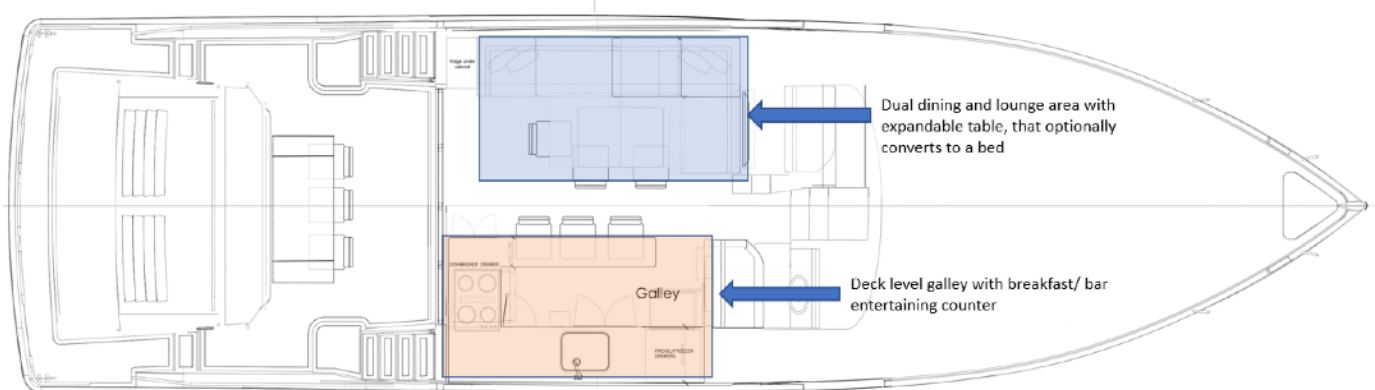


Open Plan Layout



OPEN PLAN LAYOUT

- L shaped sofa Port side, convertible to double bed
- Lift up TV behind observation seating
- Flooring out of available choices
- Expandable dining table on the port side
- Galley deck level on starboard side
- Countertop with bar style seating and storage below on galley side
- Helm station on starboard side fwd
- Observation seating on port side fwd
- Stairs down to guest cabins
- Sound system with speakers in saloon and aft cockpit
- LED "kick lighting" strips under seating and bar area
- Blinds for saloon windows
- Access to storage through hatches in the saloon floor
- Three variable height bar chairs for use at bar and dining table



GALLEY same standard equipment for both layouts

Fridge – drawer style

Freezer – drawer style

Induction stove top, and a microwave/oven

Sink and faucet

Storage drawers and cabinets

OWNER'S SUITE



Oversized Queen bed

Hanging lockers

Storage under the bed

Four hull windows with blinds

Bed headboard with curtesy lights

Reading lights

LED lights under the bed

Carpet flooring

Inspection hatches as required in the floor

OWNER'S ENSUITE

- Ensuite owner stall shower and toilet
- Basin with upper cupboard with mirror
- LED lights for mirror
- Window to bathroom with blinds
- Tecma electric toilet
- Deck hatch w/privacy blinds and screen
- Forced ventilation



GUEST CABIN

- Port side forward of saloon
- Two single beds that can be -
combined to double bed
- Storage under the beds
- Hull window with blinds
- Combined hanging locker with -
shelves, with storage below



GUEST HEAD & SHOWER ROOM

SB side forward of helm station

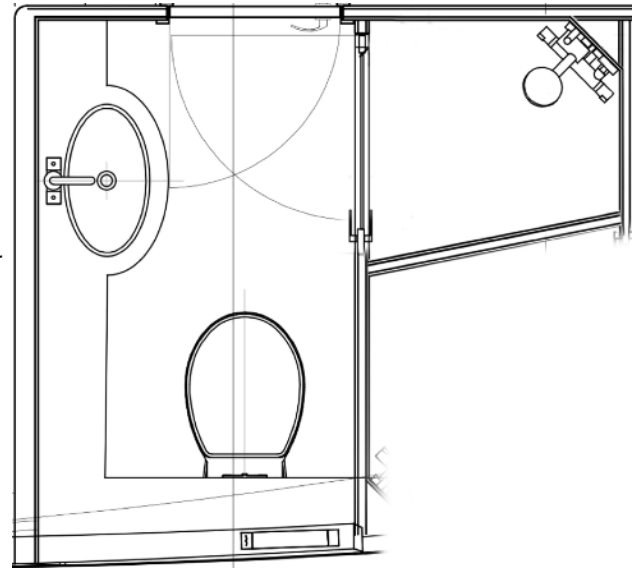
Stall shower and toilet.

Tecma electric toilet

Basin with mirror & shelf behind mirror

LED light for mirror

Forced ventilation



ENGINES & PERFORMANCE

3 x 300hp OXE diesel outboard engines

Possibility to use one, two or three engines for fuel efficiency, and to achieve various speed/ranges

Joystick docking control

GPS position holding system

Steering with integrated engine controls and joystick steering

Autopilot at main helm station

Electric bow thruster, with separate battery and charger

Zipwake dynamic trim control system

Coastkey keyless ignition system

Engine bay with gas assist lift struts for easy access and maintenance, with LED lighting

Forced fresh air system for engine bay

WATER SYSTEM

Hot and cold pressurized freshwater system
75l electric hot water heater
Fresh water tank with deck filling
Black water tank with deck discharge and direct discharge
Grey water tank with deck discharge and direct discharge

AIR CONDITIONING & VENTILATION SYSTEM

Chilled loop air conditioning throughout 36 000 BTU total
Ventilation for head areas
Air heating (defrost) for helm window

ELECTRICAL SYSTEM

Two house batteries, AGM 2x225Ah
24V electrical system
Fisher panda 8000i diesel generator
Batteries charged via generator or by the outboard engine(s) alternators or shore power connection
3 separate 12v start batteries, one for each engine
Inverter/charger 5kW
Mastervolt display for power monitoring.

CZone monitoring and control

- Touch screen control next to helm station
- Tank monitoring
- Bilge pump monitoring
- Light control system for navigation lights
- Light control for saloon

Electrical outlets, (owner option - 110V OR 230V SYSTEM) located:

- Helm station
- Galley, saloon and aft cockpit
- Each cabin and each toilet
- Storage room under deck
- USB charging in all cabins, helm and saloon

Lighting as follows:

- Owners cabin LED spotlights in roof, LED stripes under bed dimmable
- Guest cabin LED spotlights, LED stripes under bed dimmable
- Toilets LED spotlights in roof, double LED stripes for mirror
- Saloon LED spotlights in roof, LED strips under sofa
- LED light strip in ceiling
- Aft cockpit LED spotlights, LED strip under seating
- Select lights have red night light feature
- LED CMY signature light lines
- Reading lights for beds

ENTERTAINMENT

'BOYD Touch Table'. Glass & Teak outdoor dining table on the aft deck that is an integrated touch screen surface. The computer driving the touch screen enables internet browsing, gaming, access to the BOYD interactive brand experiences and navigation instrument repeating. The Touch Table will also include the boat manuals in electronic format via BOYD. When tilted up near vertically towards the interior, the table can be used as 4k Cinema screen for the interior, with the sound played via Bluetooth through the interior system.

INSTRUMENTATION

Garmin instrumentation

GPS

VHF

Plotter 16"

Depth sounder

SAFETY EQUIPMENT

Fire extinguishers 2kg located in each sleeping cabin and 6kg extinguisher in the saloon and in the aft cockpit

SERVICES

The boat will be dry tested at the factory before shipment. Tests considered:

- Pressure test of the tanks
- Pressure test of the piping
- Start up and testing of all electrical system
- Running of all pumps and systems

Test protocol of factory testing will be delivered with the boat.

Boat base price 1 255 000 € excluding VAT, sales tax and duties

OPTIONS PROGRAM

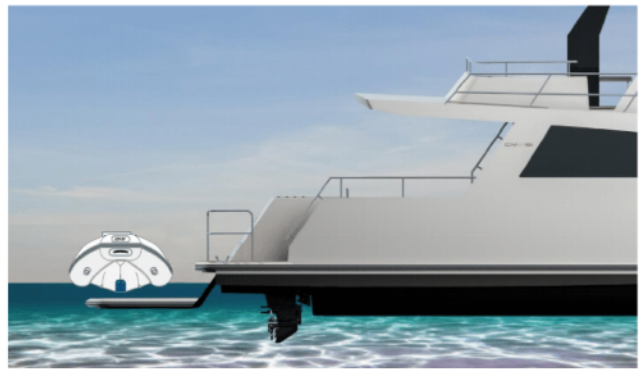
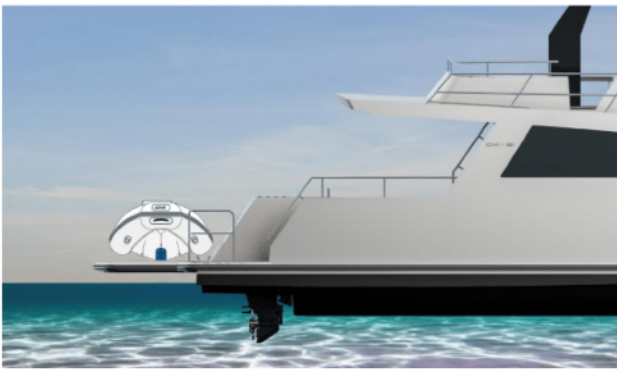
Preliminary price list of options offered on the CMY 161.

Some combinations of option still to be confirmed.

LAYOUT OPTIONS

Open Plan Layout	4 100 €
------------------	---------

OPTIONAL EXTERIOR AND DECK



Optional gelcoat colors (dark colors only available if painted – quoted upon request)	10 060 €
Teak instead of standard in aft cockpit	4 800 €
Teak instead of standard in upper seating area	2 540 €
Stainless chain and anchor	6 100 €
Tender lift/submersible swim platform	43 600 €
AB ALX 9.5 tender with engine HONDA BF15hp	17 500 €
AB ALX 9.5 tender with Torqeedo cruise 4.0 electrical motor	22 300 €
Seakeeper gyro stabilization size 6	68 500 €
Quick gyro stabilizer MC2 X19	62 100 €
Shoremaster system for powered shore power cord deployment and retraction	5 800 €
Electric powered extending passarelle for stern boarding to a non-floating dock	36 000 €
Mast on upper deck in carbon look	2 410 €

Solar panel package (4m2)	7 900 €
Helm window mesh cover	1 200 €
Aft deck enclosure – canvas/vinyl window materials	3 200 €
Fresh for anchor washdown and hot/cold water deck shower in aft cockpit	1 680 €
Fresh water hook up to dock pressure water	1 450 €
Underwater lights 4 pcs	2 620 €
Hart top "Bimini" over upper seating area made in carbon	34 900 €
Soft Sun Shade – flat stretched mesh between poles	1 440 €
Soft, foldable bimini with stainless steel frames	4 110€
Drawer fridge in aft upper seating area	2 800 €
Fabric rain/dirt covers for aft and upper deck cushions	650 €
Electric sunshade extension for aft deck, from overhead "wing"	4 200 €
Foredeck sunbed cushions	1 220 €
Foldable aft cockpit chairs 3 pcs	1 650 €
Bulwark lighting (LED downlights)	1 330 €

OPTIONAL INTERIOR

Natural OAK (Standard)	0 €
OAK white hesse stained surface treatment	2 890 €
Natural Walnut	9 500 €
Dark treated Walnut	11 770 €
Upgrade to Gulf area Air Conditioning 56 000 BTU increased generator capacity required	13 910 €
Electric height adjustable table at dining (applicable for both layouts)	6 600 €
Electronic safe	600 €
Leather upholstery	15 400 €
Electric powered blinds saloon	2 700 €
Electric powered blinds in cabins	6 900 €
Roller blinds for aft door	1 600 €
Washing machine below saloon floor	3 220 €
Drinks fridge in saloon	2 780 €
Icemaker alternative in saloon (not in combination with drinks fridge in saloon)	2 570 €
Wine fridge (Vitrifrigo)	1 940 €
Dish washer on (table version Bosch)	1 900 €
Water maker 180 L/h 230V	13 200 €

OPTIONAL ENGINES / GENERATORS

Gasoline engines 3x325Hp	Upon request
Northern Lights 9kw diesel generator instead of standard	4 500 €
Upgraded generator Fischer Panda 15000i mandatory in combination with Seakeeper and upgraded air conditioning	8 200 €
Upgraded generator Northern Lights 20kw mandatory in combination with Seakeeper and upgraded air conditioning	20 900 €
Additional battery capacity 2x225 Ah	2 600 €
Upgraded batteries Lithium 2x220 Ah	4 140 €

Upgraded batteries Lithium 4x220 Ah	7 810 €
110 V boat electrical system (Built according to CE, compatible to be used in US)	3 150 €
230 V boat electrical system (standard)	0€
Fuel polishing system Jensen additional filtering	11 300 €
Additional Engine Warranty from 2 to 3 years	7 200 €

OPTIONAL ELECTRICAL AND ELECTRONICS

FLIR-Forward Looking InfraRed camera connected to	17 100 €
Topdeck stereo system 4 speakers	1 900 €
Additional GPS screen (16")	6 500€
Radar	3 100 €
Upper deck helm control w/engine controls, joystick, auto pilot, plotter	17 600 €
High intensity head lights	690 €
WIFI (Glomex)	2 100 €
Satellite TV and internet connection (KVH Trackvision)	11 300 €
Alarm System	3 800 €
Birds Eye View docking assist system	19 890 €
Extended Siren Marine remote monitoring and control	6 200 €

OPTIONAL SAFETY EQUIPMENT AND OTHERS

Two liferafts, each for 6 persons	4 200 €
One rescue system containing 40 m floating rope	930 €
Life jackets for 12 persons (Crewsaver)	1 700€
First Aid Kit	250 €

Emergency signal flares (Seago offshore pack, Solas)	350 €
Two throwable life-ring floats in cockpit (Solas)	320 €
Mooring lines	680 €
Fenders (inflatable and fixed)	1 200 €

OPTIONAL GENERAL SERVICES

<p>Commissioning in Jakobstad</p> <ul style="list-style-type: none"> • Full testing and launching of the boat at the waterfront in Jakobstad (not available for deliveries between November and April in wintertime) • Boat launching • Testing • 2 days familiarization • Bottom painted with International Antifouling • Boat lifting if not drive away 	20 800 €
<p>Shipping to final destination</p>	Upon request
<p>Shrink wrap for shipping</p>	3 300 €
<p>Transport cradle</p>	7 800 €
<p>Engines butler Service Agreement with total 3 year warranty</p>	21 500 €